

Creating Knowledge. Since 1502.

In the 21st century, the success of a society is determined by its level of knowledge and its cognitive ability. The role of culturally orientated knowledge stemming from the humanities and the social sciences plays just as important a role as knowledge which originates in the applied sciences. International cooperation and an open-minded, tolerant research environment are indispensable preconditions for scientific progress to stay abreast of top-level international research.

Martin Luther University is highly dedicated to attracting qualified young PhD students from all over the world, offering them excellent scientific and social conditions for qualifying themselves, and giving them the opportunity to contribute to the scientific community at our University. Founded in 1502, Martin Luther University is one of the oldest alma maters in Germany and the largest educational institution in the federal state of Saxony-Anhalt, with a strong tradition in the humanities, applied sciences, and agriculture. Today four main interdisciplinary research topics have been established, which are especially characteristic for the University, namely

- Material Sciences – Nanostructured Materials
- Life Sciences – Macromolecular Structures and Biological Information Processing
- Society and Culture in Motion
- Enlightenment – Religion – Knowledge.

The University presents itself as an attractive place for research and study for about 20,000 students from all over the world, and cooperates with 52 universities around the globe. Furthermore, there are many faculty and institutional partnerships. Almost 2,000 PhD students, of which around 400 have an international background, are researching here in order to get their PhD degrees.

I warmly encourage you to contact us concerning the possibilities of an individual PhD study or to participate in a structured PhD program at Martin Luther University. I would be pleased to welcome you in Halle.

Prof. Dr. Gesine Foljanty-Jost

Vice-President for Research and Junior Scientists

Contact

International Graduate Academy InGrA

Executive Manager: Dr. Dr. Klaus-Peter Meinicke

klaus-peter.meinicke@ingra.uni-halle.de

tel +49 345 55 21746 | fax +49 345 55 27098

www.ingra.uni-halle.de

PhD Network

Coordinator: Regine Brandt

phd.network@ingra.uni-halle.de

tel +49 345 55 21745 | fax +49 345 55 27098

www.ingra.uni-halle.de/phd_network/

Postal address:

Martin Luther University Halle-Wittenberg

International Graduate Academy | PhD Network

06099 Halle (Saale)

Germany

In case of further questions concerning international study and research at Martin Luther University, please contact our International Office: info@international.uni-halle.de



InGrA

INTERNATIONAL
GRADUATE ACADEMY

PhD  network

Get your PhD in Halle.

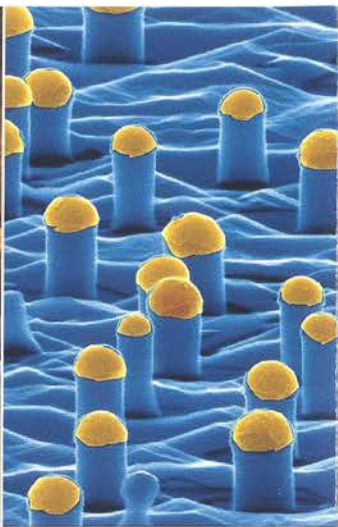
www.ingra.uni-halle.de



MARTIN-LUTHER-UNIVERSITÄT
HALLE-WITTENBERG



Inside of the classic lecture hall "Löwengebäude"



High technology for the future: nanostructure research helps in the development of new high-performance materials



The Market Place | Giebichenstein Castle and river Saale | Opera

The City of Halle

The Martin Luther University also benefits from its attractive surroundings, since the impressive University square is located right at the heart of the historic city centre of Halle with its vibrant cultural backdrop and nightlife scene. Nearby the city centre, there are parks and recreation areas along the beautiful river Saale.

Halle, the cultural capital of the state Saxony-Anhalt, hosts annual Handel Festivals. Theatres, an opera house, vaudeville, political satire groups, museums and cinemas are all concentrated inside the city centre.

With its more than 230,000 inhabitants, Halle is situated in the midst of a dynamic economic growth area where many international companies have created new offices and jobs. Germany's capital Berlin is also close-by, and the Leipzig-Halle airport provides links to all international destinations around the world.

However, it is not only the economic situation and infrastructure which makes our region an interesting place to live; it is also the beauty of the region, which is rich in tradition and culture, rivers and lakes, castles and fortresses, parks and gardens.



Francke Foundations | State Museum for Ancient History | Handel House
Photographs: © City of Halle (Saale), press office

The Martin Luther University

Halle is for the large part shaped by the Martin Luther University Halle-Wittenberg, which evolved from two separate universities. The first, founded in Wittenberg in 1502, soon became the intellectual centre of the Reformation through the teachings of Martin Luther and Philipp Melancthon. The University of Halle was founded in 1694 and was one of the historical starting points of the German Enlightenment of the 18th century, thanks to the jurist Christian Thomasius and the philosopher Christian Wolff. Both universities merged in 1817 in Halle, the historical recognition of which can still be seen in the University's double seal.

On the occasion of Martin Luther's 450th anniversary in 1933, the University was given his name, by which it is known to this day.

A comprehensive process of renovation began in 1990 and led to the University's adaption of democratic statutes.

Today, the certificated family-friendly University offers over 350 degree courses in the humanities, social and economic sciences, natural and agricultural sciences, as well as medicine, law and theology.



International PhD students in an intercultural seminar

The International Graduate Academy InGrA

The International Graduate Academy InGrA of Martin Luther University was founded in 2008 to promote and increase the quality of methodical education for PhD students on the highest international level. InGrA ensures optimal framework conditions for all PhD students and supports them to successfully complete their doctoral thesis and to start their post-doctoral scientific career.

Should you need any information about doing a PhD study or staying in Halle, please don't hesitate to contact us.

The PhD Network

The PhD Network associated to the International Graduate Academy InGrA gives international PhD students advice and support during their research and stay in Halle, and organizes German language courses as well as excursions and meetings. Furthermore, the PhD Network awards assistantships that offer international PhD students hands-on experience in research and teaching, and also provides financial aid in the final phase of doing a PhD project.